

SURPRISE GENERAL PLAN UPDATE

About The General Plan



See below for a brief overview about the General Plan, what it entails, and the project schedule. To learn more about the General Plan Update process and how to get involved visit www.surprisegpupdate.com

What is the purpose of the General Plan?

The Surprise General Plan is the long-range planning guide to outline the next 20 years of future growth and development for the City. The General Plan is broken down into a primary vision followed by goals, various policies, and detailed maps to support the plan's ultimate implementation. In application, the General Plan acts as a guide for future social, economic, and development decisions.

Why update the General Plan now?

Under the Arizona Revised Statutes, every 10 years, communities are required to have their General Plan updated and ratified by voters. As the City last ratified their General Plan in 2013, the City of Surprise is due for a General Plan update to comply with state law.

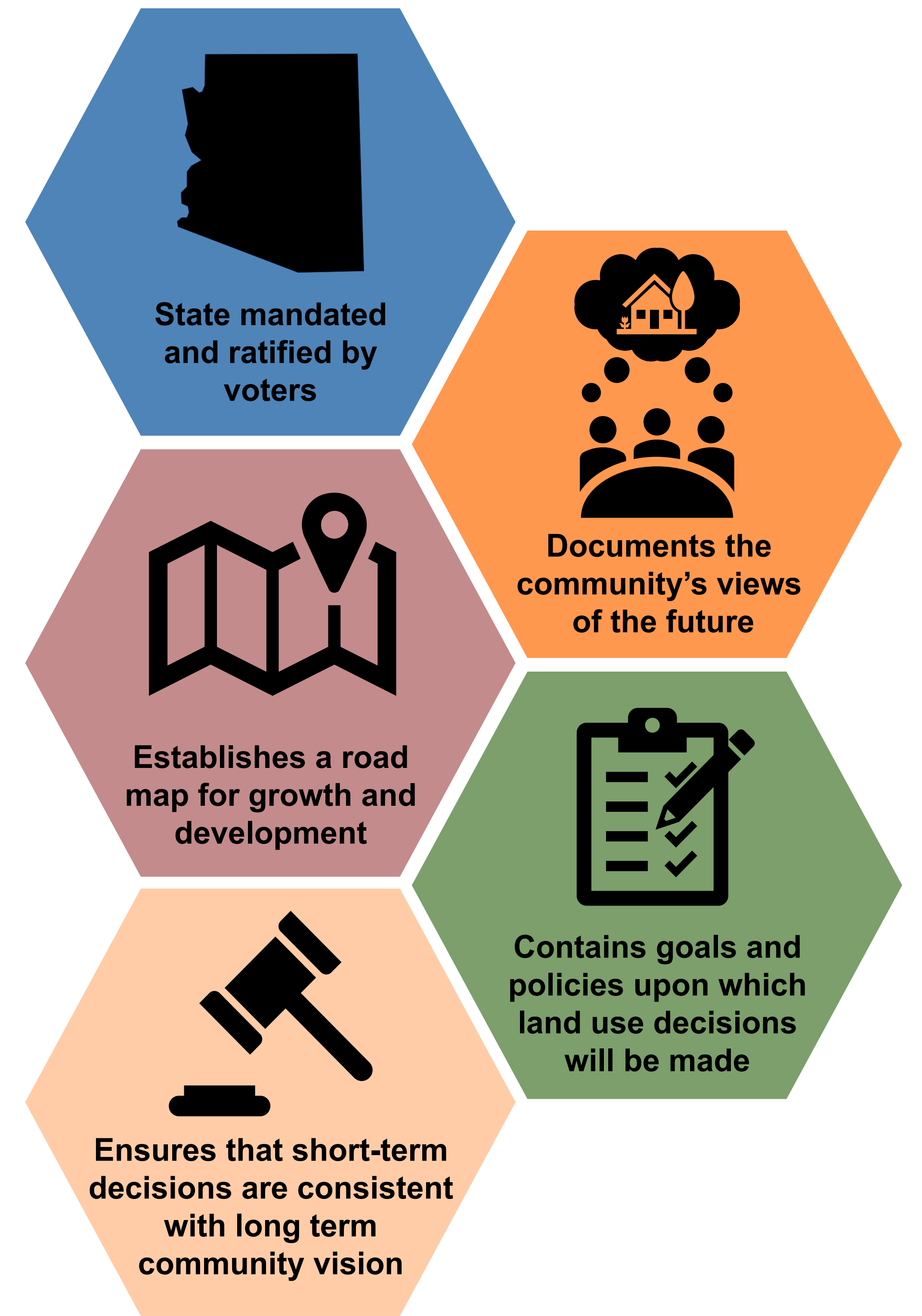
What topics does the General Plan address?

A variety of State-mandated "elements," or topics, are required in a General Plan. State law requires that a General Plan for a community the size of Surprise address the following elements:

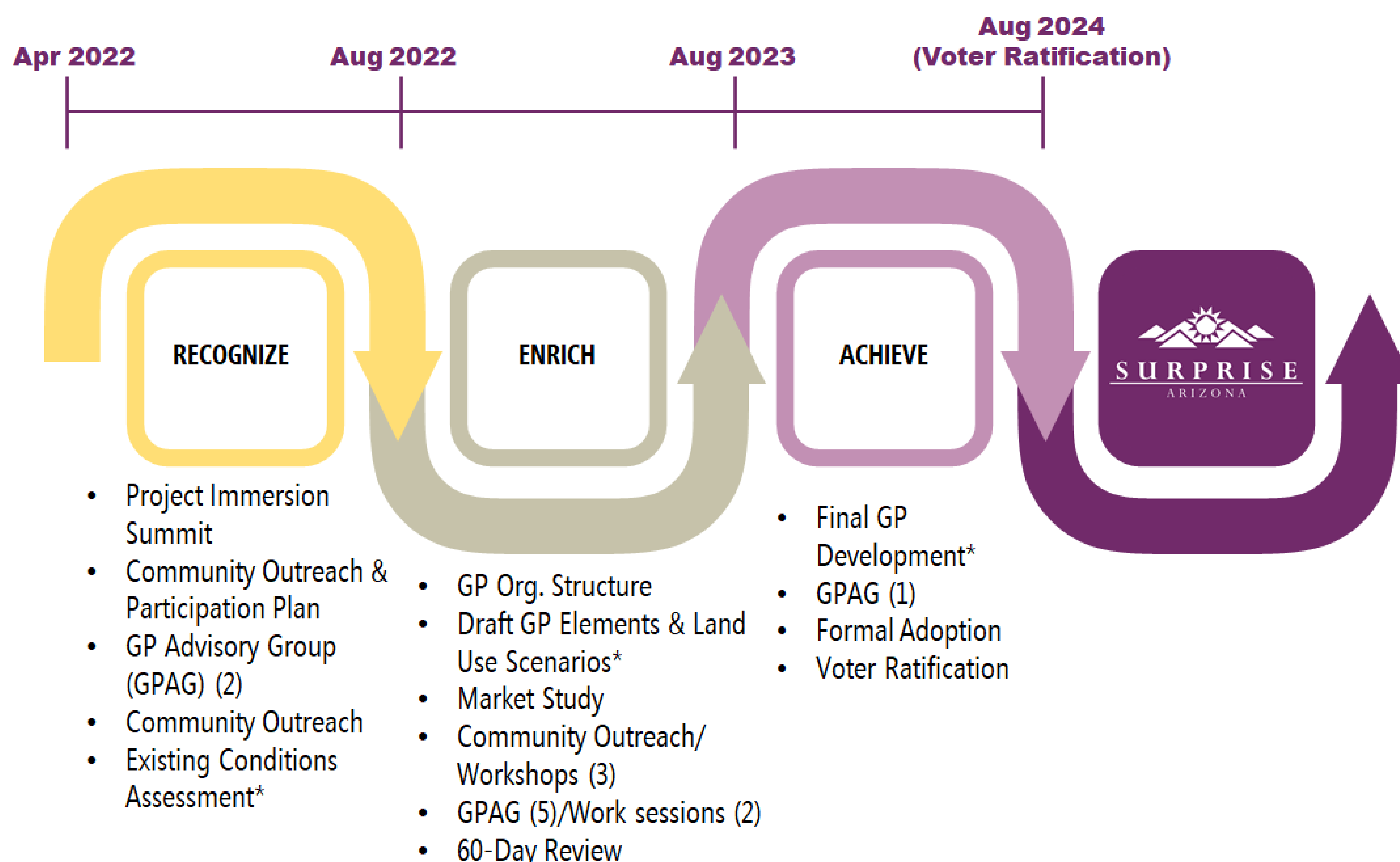
- Land Use
- Circulation
- Growth Areas
- Open Space & Recreation
- Revitalization & Redevelopment
- Neighborhood Preservation
- Environmental Planning
- Water Resources
- Conservation
- Energy
- Public Services & Facilities
- Public Buildings
- Housing
- Safety
- Cost of Development

The City of Surprise may also include additional elective elements in the General Plan that cover topics such as:

- Economic Development
- Arts & Culture
- Education
- Health



What is the schedule and process for the General Plan Update?



Follow Our Progress

SCAN ME

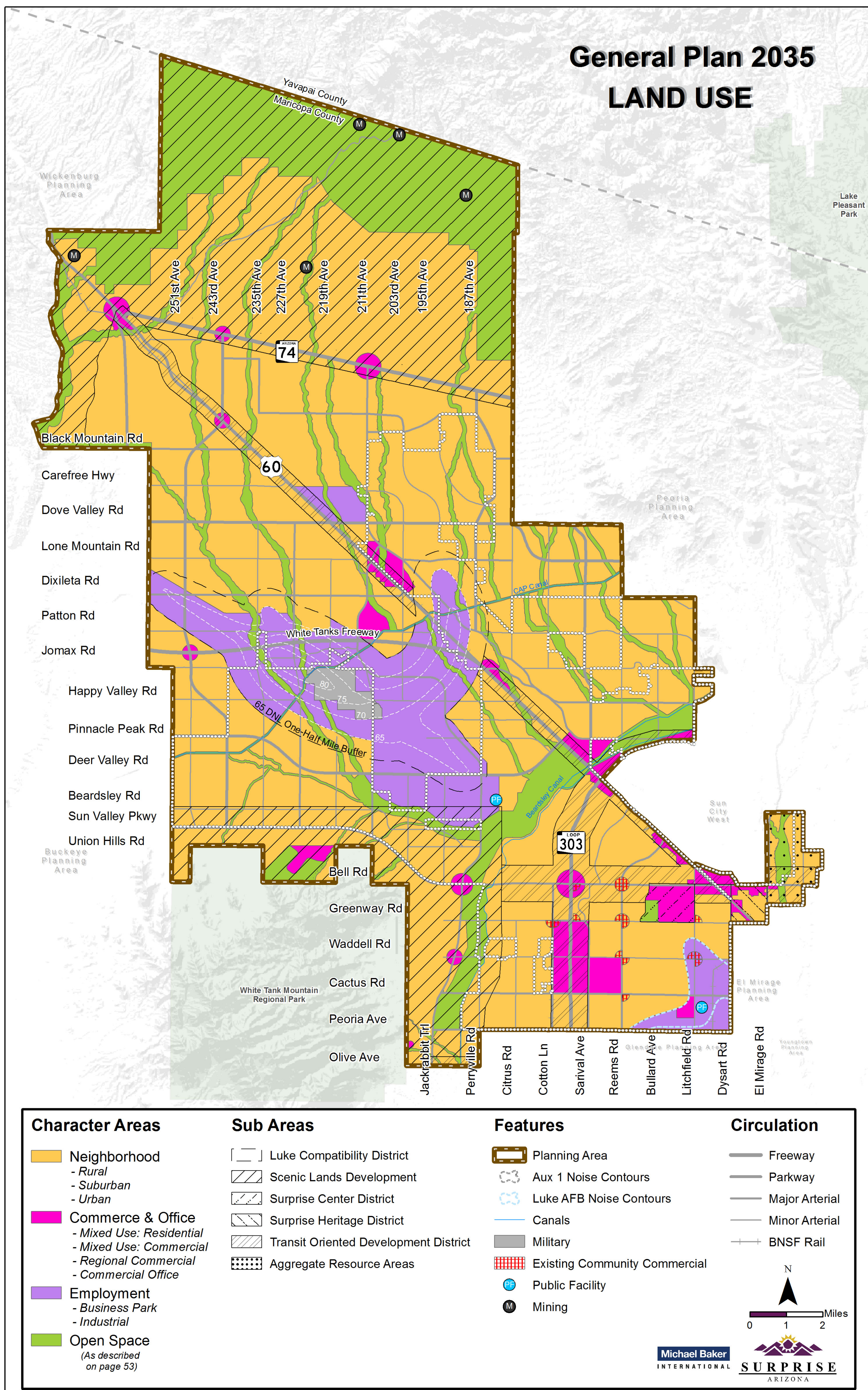
SURPRISE GENERAL PLAN UPDATE

EXISTING CONDITIONS



Review the map and data below to see a snapshot of key community components in Surprise today as we prepare for the City of tomorrow.

LAND USE PLAN (EXISTING SURPRISE 2035 GENERAL PLAN)



SURPRISE BY THE NUMBERS

6th

Safest City in Arizona

10th

Largest City in Arizona by population

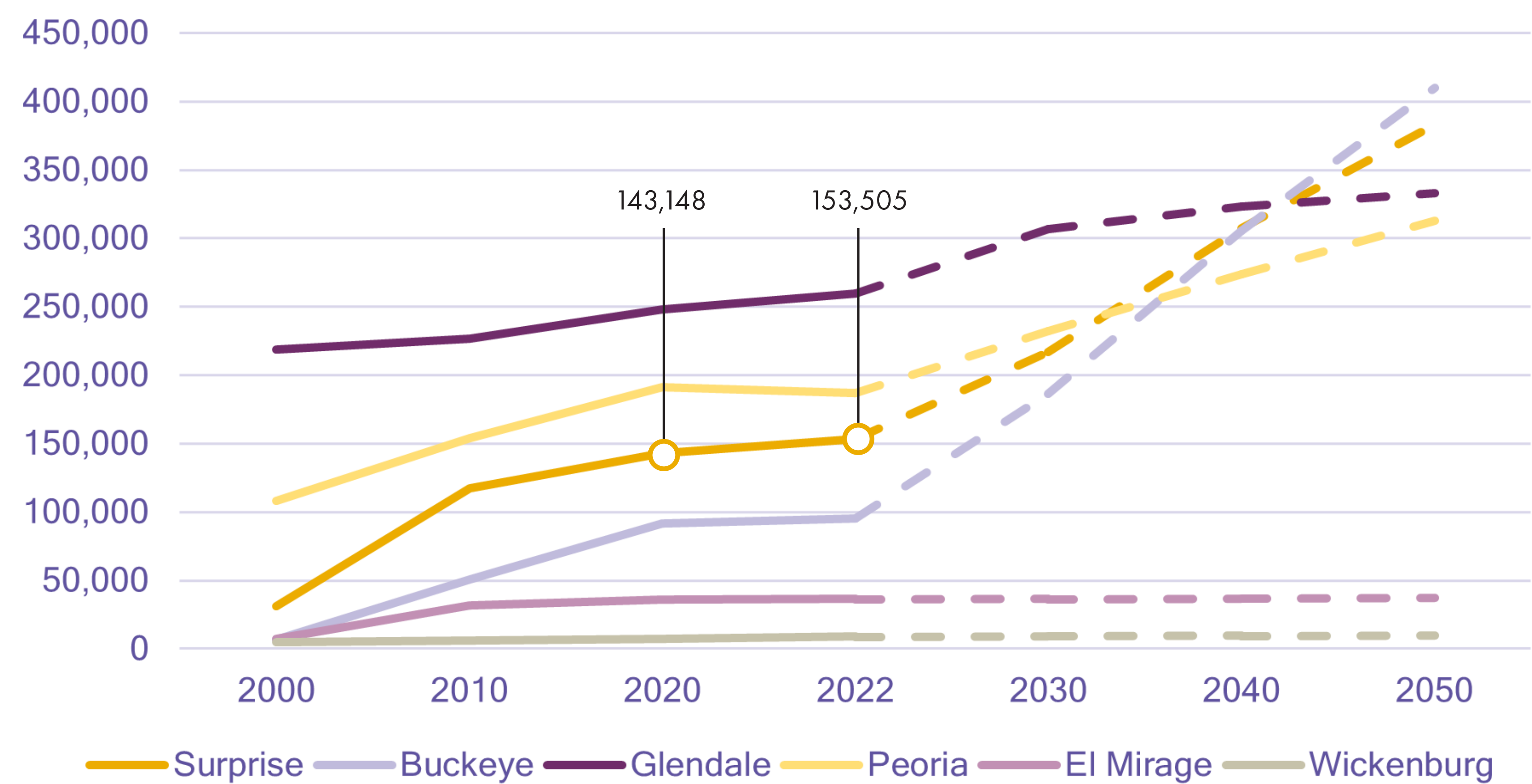
+22%

Population Change from 2010-2020

36%

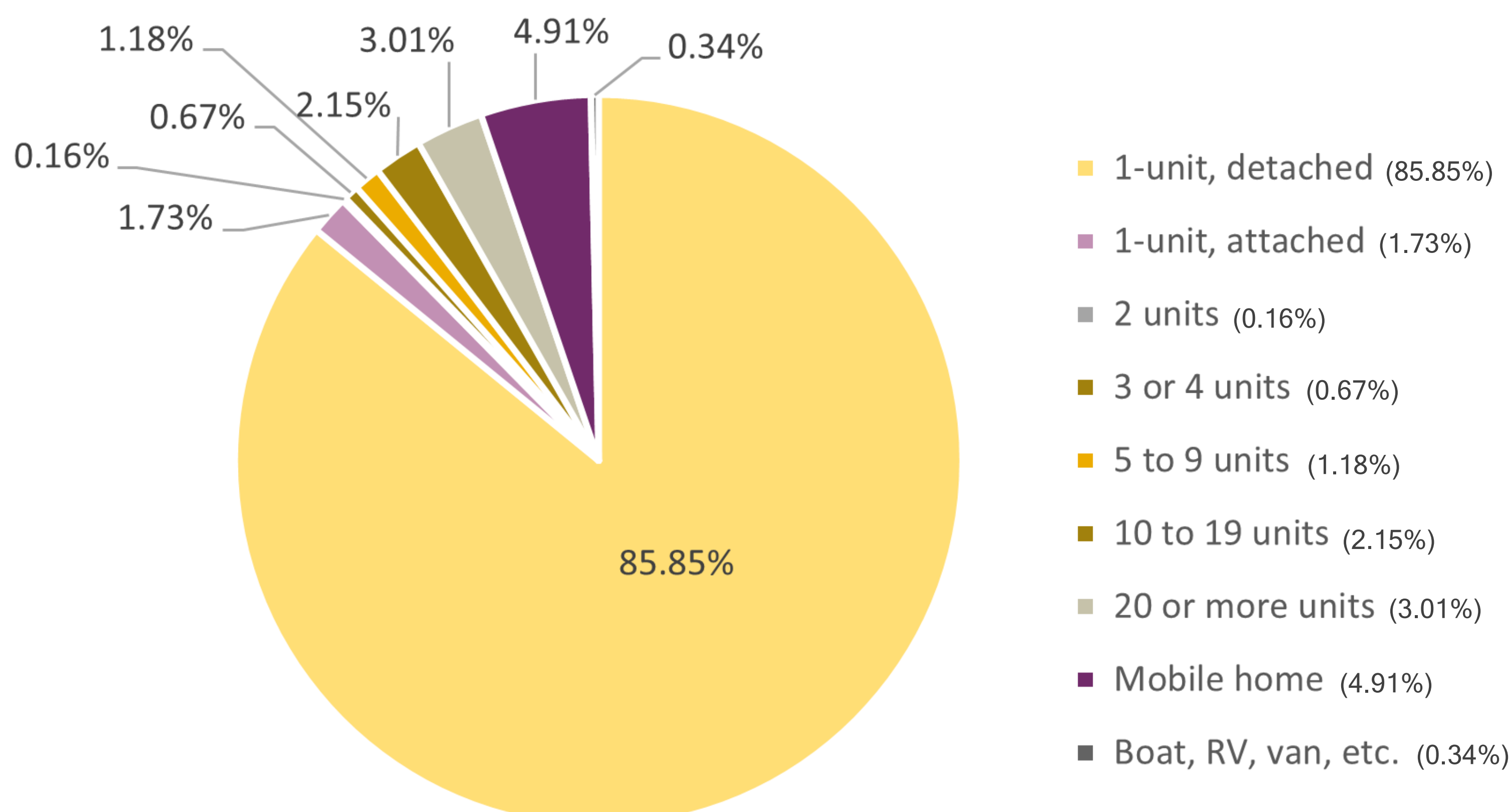
of Planning Area Annexed

POPULATION PROJECTIONS



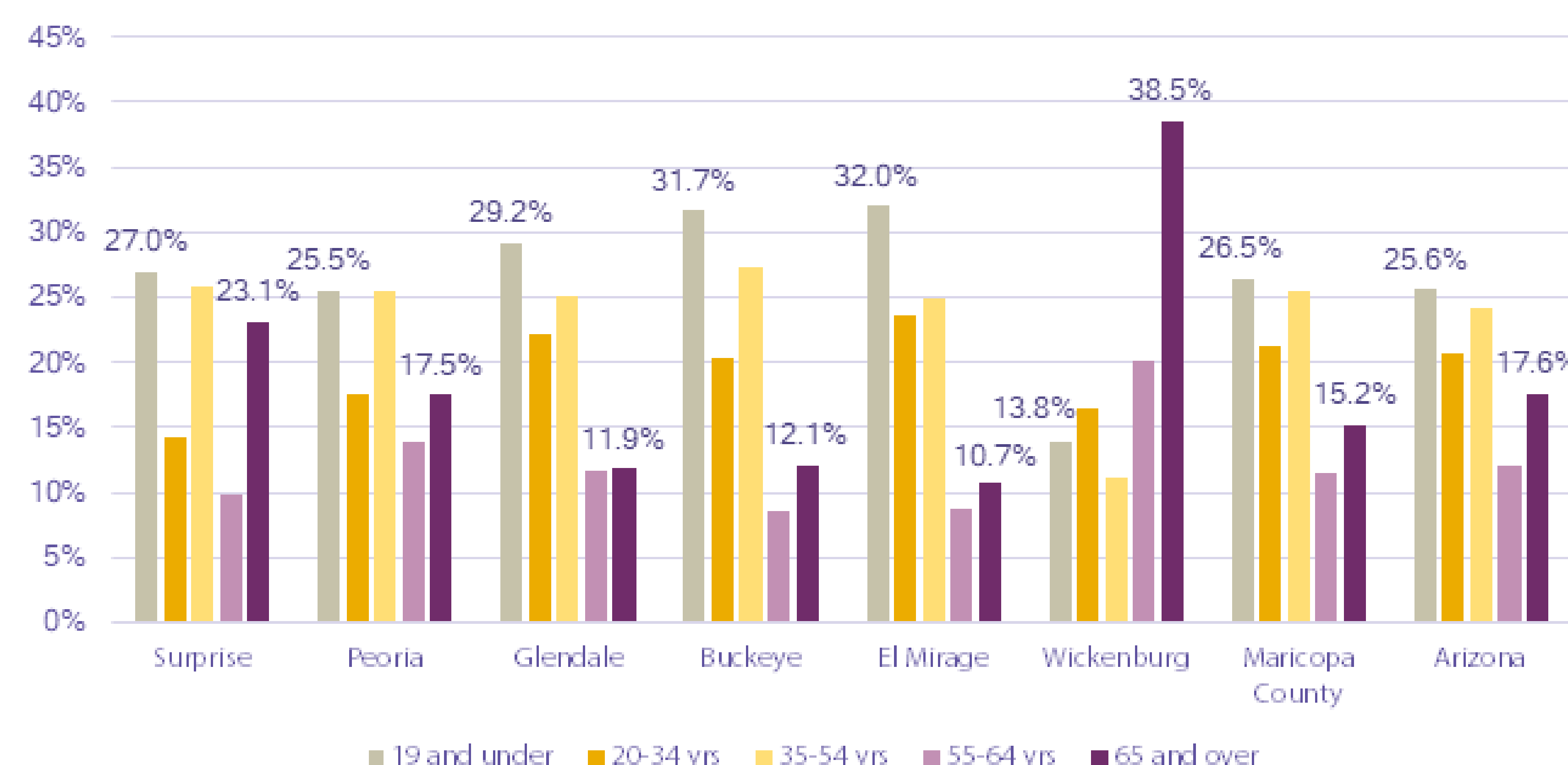
Source: U.S. Census Bureau, 2000, 2010, 2020 Decennial Census, 2020 ACS 5-Year Estimates and MAG

HOUSING TYPES



Source: U.S. Census Bureau, 2020 American Community Survey 5-Year Estimates

AGE COHORTS



Source: U.S. Census Bureau, 2020 American Community Survey 5-Year Estimates

SURPRISE GENERAL PLAN UPDATE

Vision & Values



The General Plan is guided by a vision for the desired future of Surprise. Public input is critical to establishing this Vision Statement. View the existing General Plan Vision Statement and Community Values and then respond to the questions on the board using the sticky notes provided. We will use your feedback to help guide refining both the Vision Statement and/or Community Values as necessary.

2035 General Plan Vision Statement

The City of Surprise strives to uphold the values of its residents while balancing physical and economic growth, and maintaining a safe community. A high standard of living should be fostered by enhancing neighborhood and community amenities. Vibrant and diverse development is important for a young community, and Surprise should aim to preserve the uniqueness and history of the City.

What one word best describes Surprise?

-PLACE NOTE HERE-

2035 General Plan Community Values

1 **A Clean and Safe Community:**
Well maintained streets, attractive commercial properties, and clean neighborhoods are vital to creating a safe, healthy, and enjoyable community.

2 **Economic Development:**
Support for small business is a community priority, with additional focus needed on downtown growth, attracting both high-end retail and a regional mall, and expanding higher education opportunities.

3 **Sustainability:**
Environmentally conscious development standards, water conservation strategies and valuing the preservation of open space, natural terrain and vegetation, will help prepare Surprise for long-term sustainability.

4 **Quality Transportation Systems:**
A complete transportation network helps support community connectivity and fosters future growth. Connecting to regional freeway systems is an important priority, as is completing partially built streets. Bike lanes, walking trails and commuter rail should be considered to help enhance the overall network.

5 **Recreation:**
Having the opportunity for recreation is a valued asset for all age groups in Surprise. Facilities should be expanded to include regional parks, a centralized community recreation center and other various facilities.

What are some other key features or attributes that define Surprise?

-PLACE NOTE HERE-

What are some aspirations for what the community would like to be over the next 20 years?

-PLACE NOTE HERE-

SURPRISE GENERAL PLAN UPDATE

Community Survey



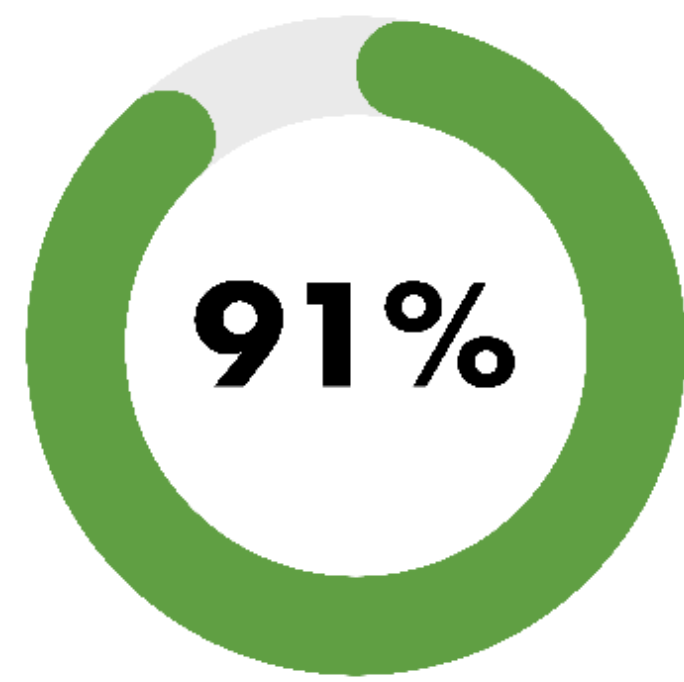
The National Community Survey or (NCS) is a scientific benchmarking survey with the purpose of gathering a comprehensive and accurate picture of livability and resident perspectives. The data shown below was gathered from the Surprise 2021 NCS. Please review and share your feedback.

OVERALL PERCEPTIONS

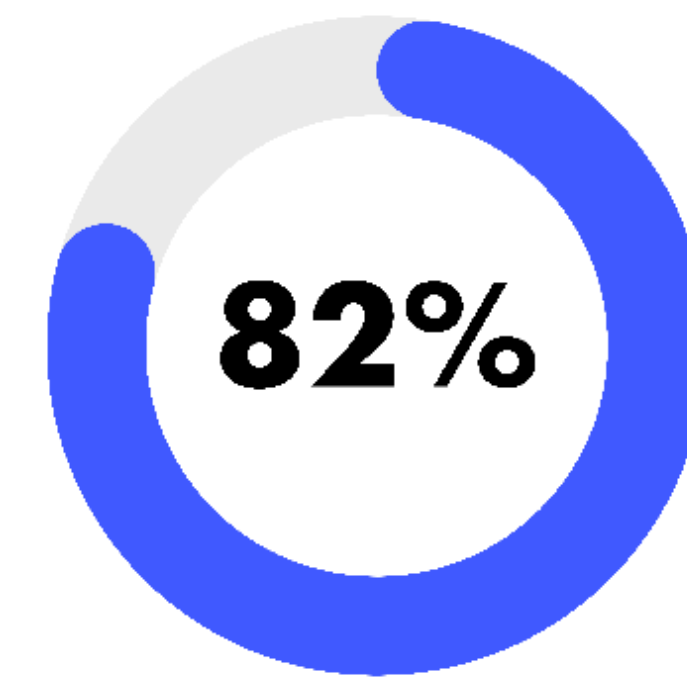
The following percentages are for resident ratings of Excellent or Good. There was an increase in each of these areas since the 2018 survey.



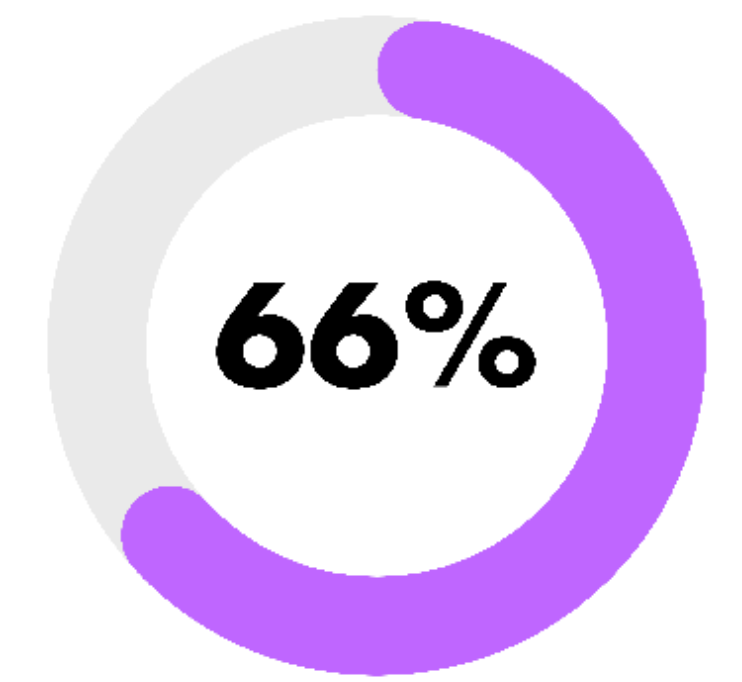
Place to Live



Quality of Life



Quality of City Services



Confidence in City Government

WHERE WE SHINE

The following percentages reflect resident ratings of Excellent or Good. Asterisk (*) indicates a rating above the national benchmark.

Safety in neighborhoods



97%

Cleanliness of the city*



91%

Economic Health of the city*



88%

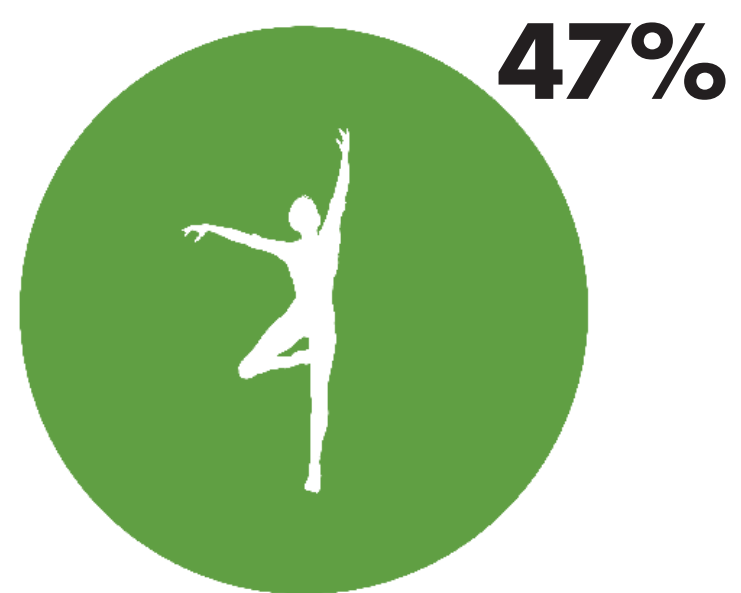
In what other areas do you think the City shines?

- PLACE A DOT IF YOU AGREE -

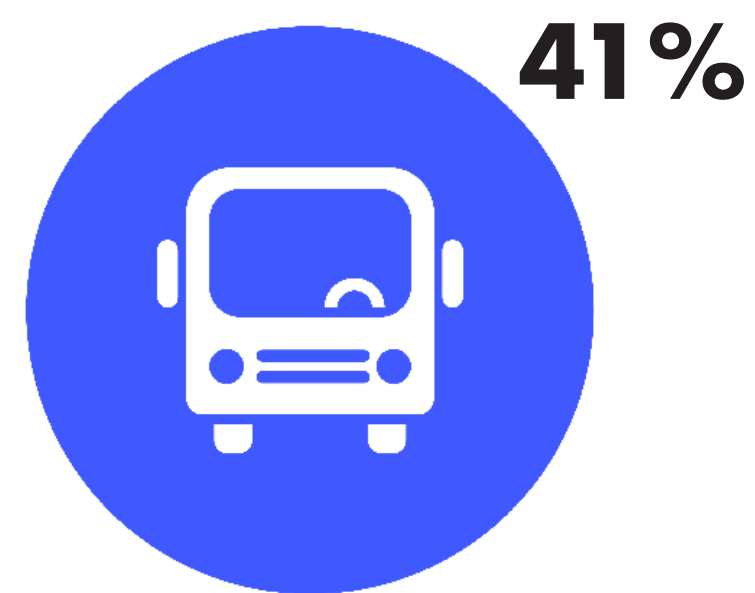
-PLACE NOTE HERE-

WHERE WE CAN DO BETTER

The following percentages reflect resident ratings of Excellent or Good. Asterisk (*) indicates a rating below the national benchmark.



Arts/Culture/Music* attendance opportunities



Transportation System* overall quality (auto, bicycle, foot, bus)



6-Month Economic Forecast will have a positive impact on your family

In what other areas do you think the City can do better?

- PLACE A DOT IF YOU AGREE -

-PLACE NOTE HERE-

SURPRISE GENERAL PLAN UPDATE

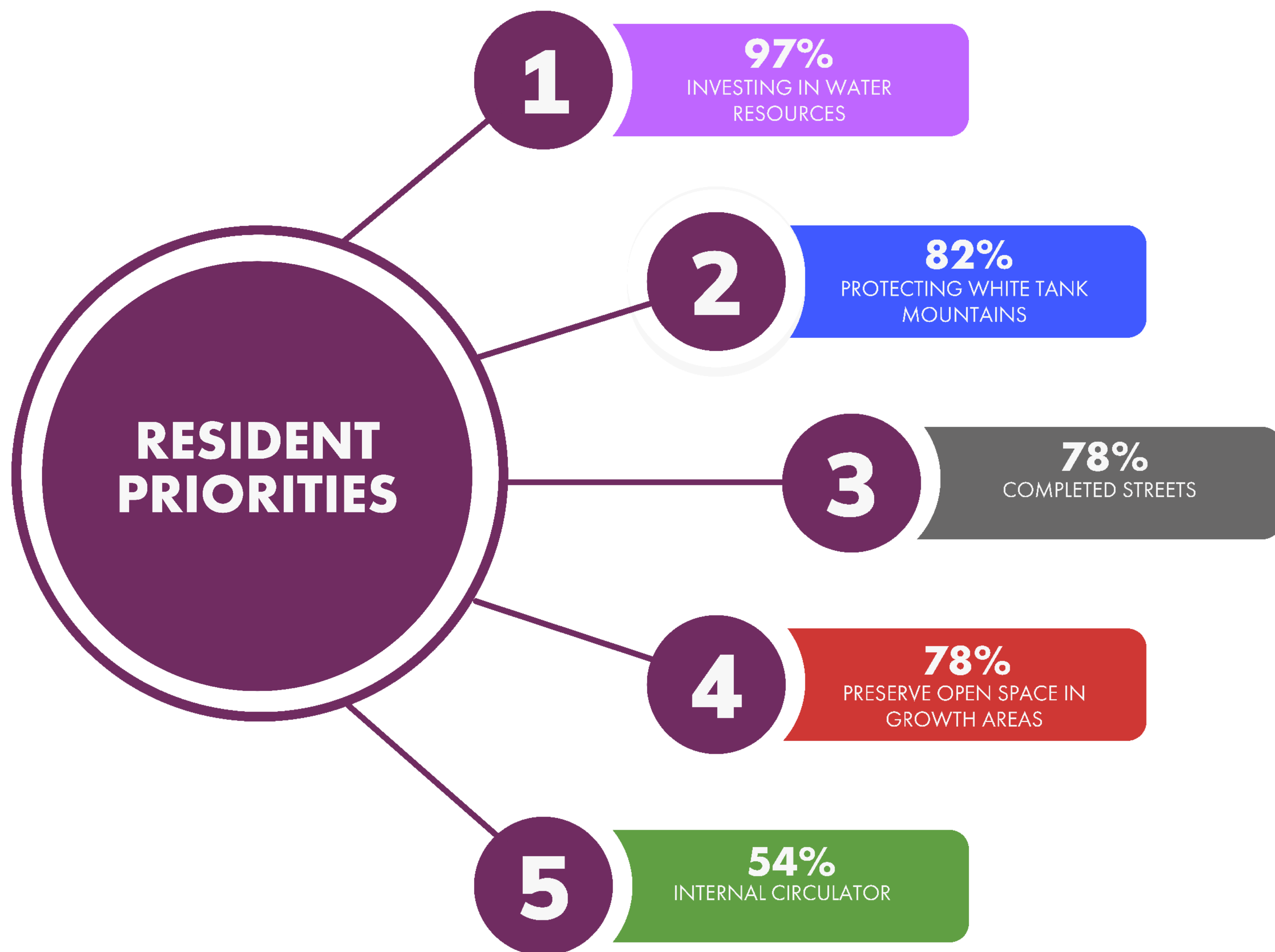
Community Survey



The National Community Survey or (NCS) is a scientific benchmarking survey with the purpose of gathering a comprehensive and accurate picture of livability and resident perspectives. The data shown below was gathered from the Surprise 2021 NCS. Please review and share your feedback.

RESIDENT PRIORITIES RANKED

Residents were asked to rank priorities for Surprise over the next three years. The following percentages reflect resident ratings of a High/Medium Priority.



Additional priorities that were supported included: Build more parks/fields (51%), Connected trail system (44%), and Community pool (32%).

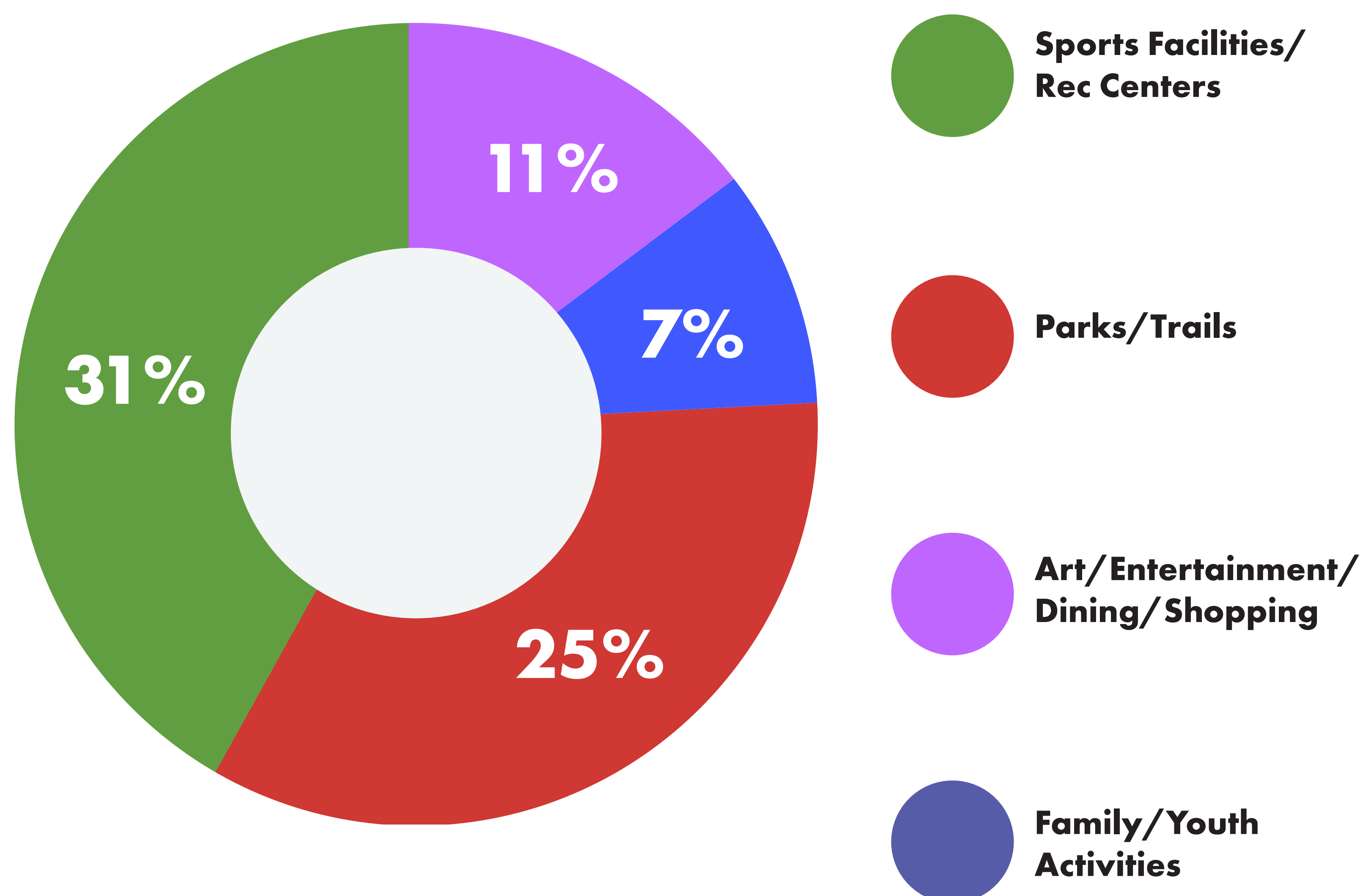
What other priorities would you add?

- PLACE A DOT IF YOU AGREE -

-PLACE NOTE HERE-

RECREATION & LEISURE WISH LIST

Resident responses to "What is the single most important public recreational amenity you think is missing from Surprise?"



Additional amenities included: 9% Downtown, Local Economy and Infrastructure; 17% responded "Don't Know".

What other public recreational or leisure amenity would you add?

- PLACE A DOT IF YOU AGREE -

-PLACE NOTE HERE-

SURPRISE GENERAL PLAN UPDATE

Community Map



Place a sticky dot on the map to identify areas in Surprise to "Target Growth", "Improve", or "Preserve". You may also place sticky notes on the board to leave a more detailed comment.

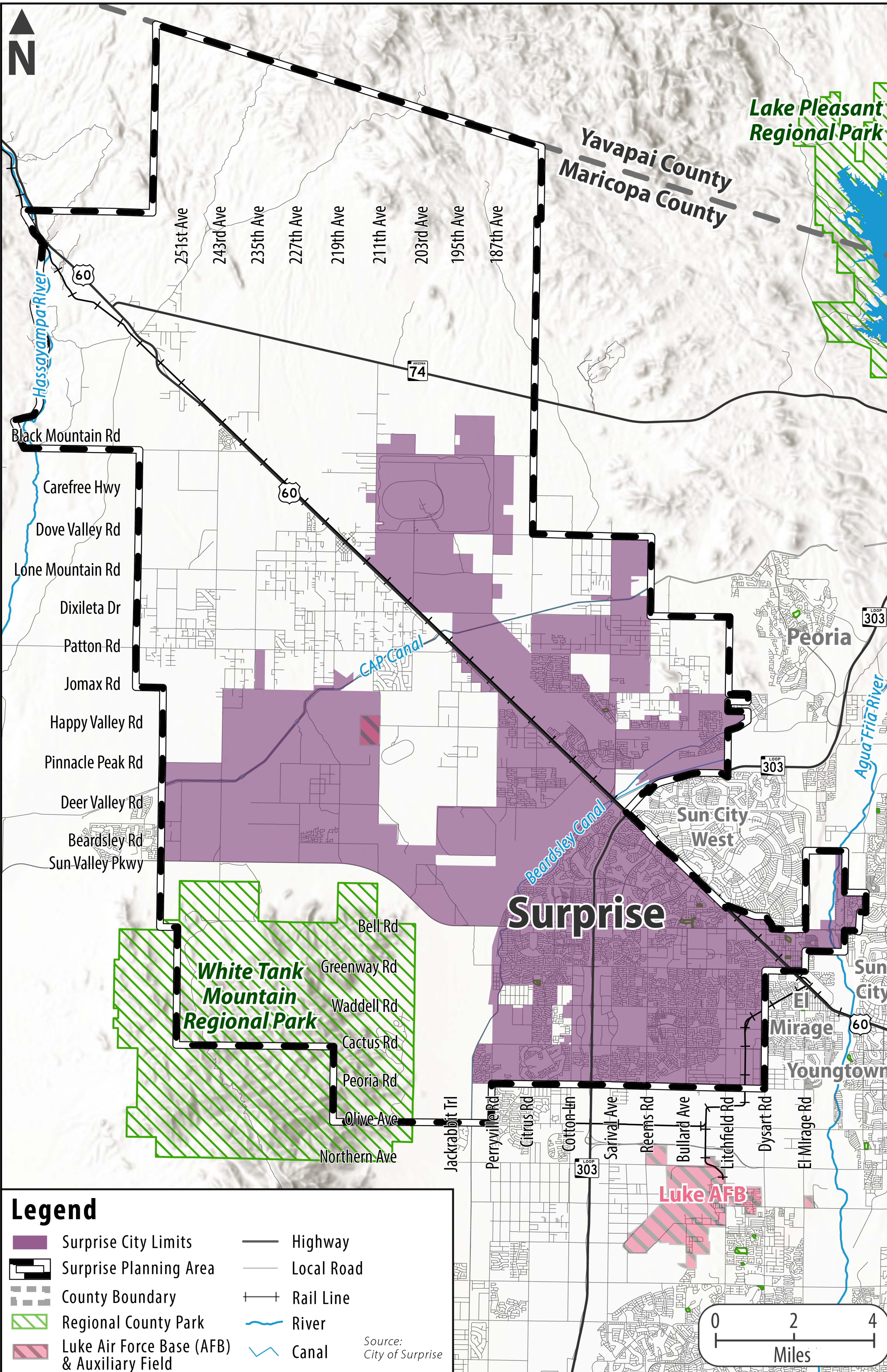
Sticky Dot Key

Areas to:

Target Growth

Improve

Preserve



Legend

- Surprise City Limits
- Surprise Planning Area
- County Boundary
- Regional County Park
- Luke Air Force Base (AFB) & Auxiliary Field
- Highway
- Local Road
- Rail Line
- River
- Canal

Source:
City of Surprise

